



Available after July **NEW DESIGN**

# DINOSAUR



**FLEXIBLE  
DUCTS  
SELF-ADHESIVE**

Dinosaur Duct is a unique product offering from IBOCO that is a flexible, resilient and efficient harnessing solution to your wiring needs.

For wiring to cabinet doors, from control panels and for electronic equipment.

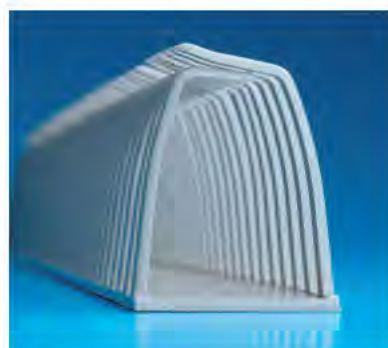
For that part of the cable run that leans against the side of the control cabinet.

- Due to the flexibility of the material individual wires can easily be added, or removed from total wires within the duct.
- Since Dinosaur has no cover it can accommodate cables in restricted space applications, and also effectively removes the need for cable ties.
- It can be used in extreme operating conditions (i.e. max. temp. up to 176°F) and has excellent resistance to radiation if exposed to a nuclear environment.
- Dinosaur withstands mechanical stress when installed (i.e. earthquake, falling equipment) while in the event of fire does not emit corrosive, nor toxic gases, and smoke development is minimal.
- The duct can be cut to desired length using scissors or knife.

When applying the Dinosaur with adhesive tape, it is necessary to make sure that the surface is perfectly clean and dry.

Catalog Number	Nominal Size	Lengths* per Carton
DN 25AG	.50 x .75	24
DN 35AG	1.00 x 1.38	24
DN 45AG	1.38 x 1.75	14

\* Each length is 19.7 inches (500 mm)



## Material

Polypropylene  
self-extinguishing

## Color

GREY  
RAL 7030

