

FUSE HOLDER TYPES

Regal's Marathon® Special Products provide many NEMA®/barrier style fuse holders with different terminal options for the majority of North American fuses and several enclosed (European/IEC) styles.

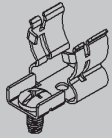
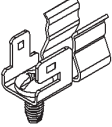
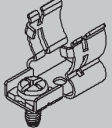
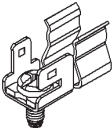
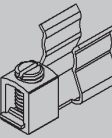
CLASS	PAGE #	STYLES	APPLICATIONS	AMP/VOLT RANGE	WITHSTAND/SCCR
CC Class	44	Barrier Enclosed	For branch and small motor protection where high current limitation is required.	30-60 A 600 V	200,000
Fused Disconnect Switch	45	Disconnect	UL98 load breaking disconnect switch.	30 A 120-600 V	200,000
G Class	46	Barrier, Open	For use in branch circuits where higher performance and lower power levels are needed.	15-30 A 480-600 V	100,000
General Purpose (Semi-Cond.)	47	Stud, Stud / Terminal	Recognized holders for fuses with bolt down mounting such as semi-conductor, high-speed or industrial types (Classes J, T & L).	100-1200 A 1000 V	See Data Sheets
H Class	49	Barrier Panel-Board	For protection where frequent outages are common and there are low levels of available fault current.	30-600 A 250-600 V	10,000
J Class	50	Barrier, Open Enclosed	For maximum protection of motors, controllers or panels.	30-600 A 250-600 V	200,000
Midget (10x38)	52	See Website	For branch circuits in more general applications where current limitation requirements are lower.	30-60 A 600 V	See Data Sheets
Photovoltaic	See Website	Enclosed	For protection in solar power generation systems.	Up to 30A 1000 V	30,000
R Class	53	Barrier	For higher levels of protection at the same size of the H Class, where higher levels of fault current potential exist.	30-600 A 250-600 V	200,000
T Class	54	Barrier, Open	For a high degree of protection in situations where space is limited.	30-800 A 300-600 V	200,000
Accessories	55	Covers, DIN Rail Adapters	H, R, J, CC & M styles.	N/A	N/A

WEBSITE RESOURCES:

- Dimensional drawings & 3D CAD files
- Termination and mounting specifications
- Detailed product/series data sheets
- Check distributor stock
- Request samples

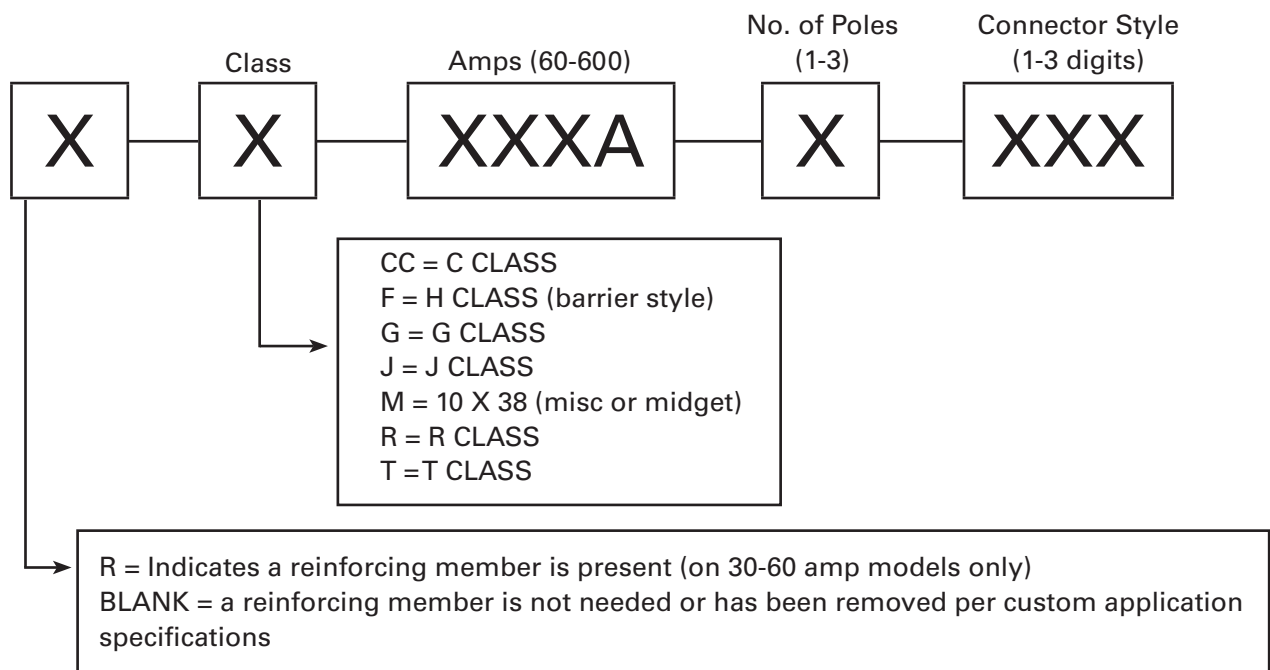
NEMA is a trademark of National Electrical Manufacturers Association. All Rights Reserved.

WIRE CONNECTOR STYLES

HARDWARE OPTIONS		DESCRIPTION	ILLUSTRATION
S	Screw	Standard screw fastener primarily for ring/spade/fork terminals or small bare wire.	
SQ	Screw with Quick Connects	Screw terminal with additional 1/4" male quick-connect options.	
SP	SEMS Pressure Connector	Screw with a captive washer to provide more contact area for larger bare wire termination.	
SPQ	SEMS Pressure Connector with Quick Connects	SP option with additional 1/4" male quick-connect options.	
B	Box (or Compression) Terminals	Box connectors are ideal for large bare wire (up to 60A) termination.	

CATALOG NUMBER NOMENCLATURE:

Excludes panel boards, enclosed and general purpose / recognized types.



CLASS CC

ELECTRICAL:

30/60 amps, 600 volts
 200,000 amp withstand
 For use with UL Class CC fuses only
 Blown fuse indication available (6SC30AxI-C)

STANDARDS:

UL recognized file no. IZLT2.E35113
 CSA certified file no. LR21455
 CE compliant
 Touchsafe design (IP20) per IEC60529 (enclosed only)
 RoHS compliant

WEBSITE RESOURCES:

Dimensional drawings & 3D CAD files
 Termination and mounting specifications
 Detailed product data sheets

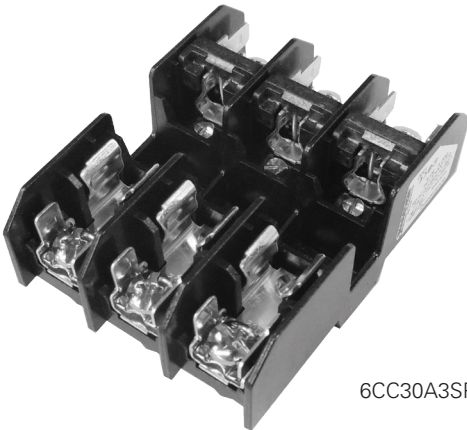


6SC30AI C

ENCLOSED

AMPS	CATALOG # (REPLACE "x" WITH # OF POLES)	POLES (x)	BASE MATERIALS	WIRE RANGE
30	6SC30Ax C	1/2/3/4	Thermoplastic	1) #6 - #18 CU Stranded 1-2) #10 - #18 CU Stranded
30	6SC30AxI C	1/2/3/4	Thermoplastic	1) #10 - #18 Solid

EFK-MCKK - Pin kit (used for ganging multiple poles) - includes 10 handle pins and 20 body clips, use one handle pin and two body clips per pole



6CC30A3SPQ



6CC30A3B

BARRIER

AMPS	CATALOG # (REPLACE "x" WITH # OF POLES)	POLES (x)	BASE MATERIALS	WIRE RANGE
30	6CC30AxSQ	1/2/3	Thermoplastic	#10 - #22 AWG CU
30	6CC30AxSPQ	1/2/3	Thermoplastic	#10 - #14 AWG CU
30	6CC30AxB	1/2/3	Thermoplastic	#6 - #14 AWG CU
30	6CC30AxBCU	1/2/3	Thermoplastic	#6 - #14 AWG CU
60	R6CC60AxB	1/2/3	Thermoplastic	#2 - #14 AWG CU #2 - #12 AWG AL

FUSED DISCONNECT SWITCH

ELECTRICAL:

30 amps

Volts - see table

Minimum indicator voltage - 90V AC

For use with UL Class CC fuses only

STANDARDS:

cULus listed file no. WHTY.E483215

- UL98 - Open type switches
- CSA C22.2 No. 4 - enclosed and deadfront switches

IEC 60947-3

Touchsafe design (IP20) per IEC60529

RoHS compliant



FDS-30-C-2

WEBSITE RESOURCES:

Dimensional drawings & 3D CAD files

Termination and mounting specifications

Detailed product data sheets

VOLTS	AMPS	CATALOG #	POLES (x)	WIRE TYPE	WIRE RANGE
120 AC / 125 DC	30	FDS-30-C-1	1	75° C CU Wire or Higher (CU75)	#4 - 18 AWG
600 AC	30	FDS-30-C-2	2	75° C CU Wire or Higher (CU75)	#4 - 18 AWG
600 AC	30	FDS-30-C-3	3	75° C CU Wire or Higher (CU75)	#4 - 18 AWG

CLASS G

ELECTRICAL:

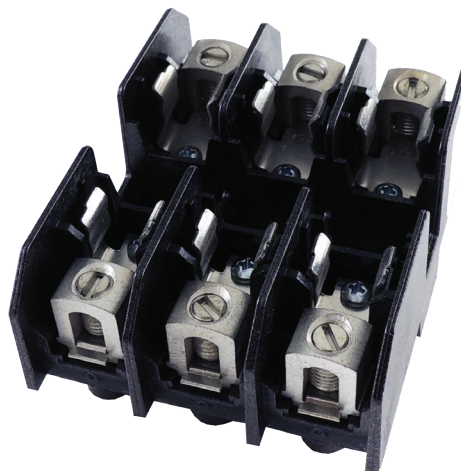
15, 20 & 30 amps, 480 & 600 volts
 100,000 amp withstand
 For use with UL Class G fuses only

STANDARDS:

UL recognized file no. IZLT2.E35113
 CSA certified file no. LR21455
 CE compliant
 RoHS compliant

WEBSITE RESOURCES:

Dimensional drawings & 3D CAD files
 Termination and mounting specifications
 Detailed product data sheets



RG30A3B



RG20A3SPQ

VOLTS	AMPS	CATALOG # (REPLACE "x" WITH # OF POLES)	POLES (x)	BASE MATERIALS	WIRE RANGE
480	30	RG30AxSQ	1/2/3	Thermoplastic	#10 - #22 AWG CU
	30	RG30AxSPQ	1/2/3	Thermoplastic	#10 - #14 AWG CU
	30	RG30AxB	1/2/3	Thermoplastic	#6 - #14 AWG CU
	30	RG30AxBCU	1/2/3	Thermoplastic	#6 - #14 AWG CU
600	15	RG15AxSQ	1/2/3	Thermoplastic	#10 - #22 AWG CU
	15	RG15AxSPQ	1/2/3	Thermoplastic	#10 - #14 AWG CU
	15	RG15AxB	1/2/3	Thermoplastic	#6 - #14 AWG CU
	15	RG15AxBCU	1/2/3	Thermoplastic	#6 - #14 AWG CU
	20	RG20AxSQ	1/2/3	Thermoplastic	#10 - #22 AWG CU
	20	RG20AxSPQ	1/2/3	Thermoplastic	#10 - #14 AWG CU
	20	RG20AxB	1/2/3	Thermoplastic	#6 - #14 AWG CU

See page 55 for available covers
 See page 56 for DIN rail adapter

GENERAL PURPOSE / MODULAR

ELECTRICAL:

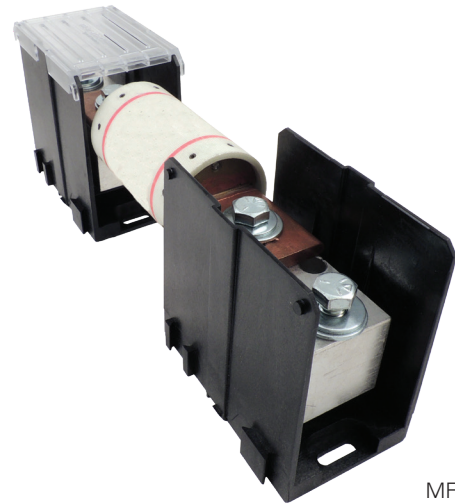
Up to 600 amps, 1500 volts AC/DC
 SC withstand 200kA (600V), 10kA (1500V)

STANDARDS:

UL Recognized fuse holder, evaluated to UL 4248-1,
 file no. IZLT2.E35113
 cURus - investigated to CSA C22.2 No 4248.1-07

WEBSITE RESOURCES:

Dimensional drawings & 3D CAD files
 Termination and mounting specifications
 Detailed product data sheets



MFH SERIES

CATALOG # ¹	AMPS	VOLTS	COVER INCLUDED	FOR FUSE TYPES	FUSE TERMINAL	LINE SIDE TERMINAL	LOAD SIDE TERMINAL
MFH6153DD CH	600	1500	Yes	Specialty / Semi-conductor / High-speed	3/8" Tap	3/8" Tap	3/8" Tap
MFH6153DD	600	1500	No	Specialty / Semi-conductor / High-speed	3/8" Tap	3/8" Tap	3/8" Tap
MFH6063DD CH	600	600	Yes	J & T Class	3/8" Tap	3/8" Tap	3/8" Tap
MFH6063DD	600	600	No	J & T Class	3/8" Tap	3/8" Tap	3/8" Tap
MFH8155FF CH	800	1500	Yes	Specialty / Semi-conductor / High-speed	1/2" Tap	1/2" Tap	1/2" Tap
MFH8155FF	800	1500	No	Specialty / Semi-conductor / High-speed	1/2" Tap	1/2" Tap	1/2" Tap
MFH8065FF CH	800	600	Yes	J, T & L Class	1/2" Tap	1/2" Tap	1/2" Tap
MFH8065FF	800	600	No	J, T & L Class	1/2" Tap	1/2" Tap	1/2" Tap

¹Each item provides one pair for one fuse

GENERAL PURPOSE/SEMI CONDUCTOR

ELECTRICAL:

See table

STANDARDS:

UL recognized file no. IZLT2.E35113

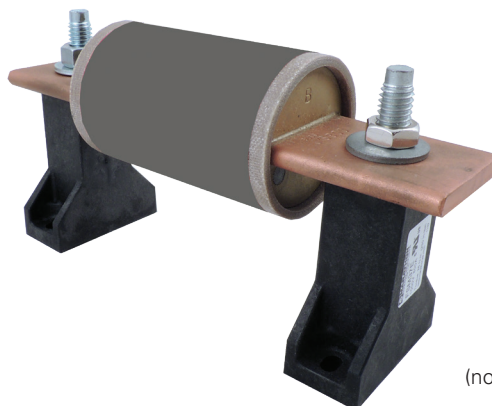
RoHS compliant

WEBSITE RESOURCES:

Dimensional drawings & 3D CAD files

Termination and mounting specifications

Detailed product data sheets



FSM37E
with fuse
(not included)

VOLTS	AMPS	CATALOG # ¹	STUD SIZES ¹	APPLICATION TORQUE	SC WITHSTAND RATING	MOUNTING
Up to 1000V AC/DC	400	FSM25E	1/4"-20 Stud	75 in-lbs	Approved for 200,000A; tested at 111 kA ² s (I ² t) and 20.0 kA (I _p)	#10 fastener, torque to 25-30 in. lbs.
	800	FSM37E	3/8"-16 Stud	230 in-lbs	Approved for 200,000A; tested at 274 kA ² s (I ² t) and 26.2 kA (I _p)	#10 fastener, torque to 25-30 in. lbs.
	1200	FSM50E	1/2"-13 Stud	300 in-lbs	Approved for 200,000A; tested at 465 kA ² s (I ² t) and 30.8 kA (I _p)	1/4" fastener, torque to 25-30 in. lbs.

¹Each item provides one unit

ELECTRICAL:

Amps - see table

600 volts

STANDARDS:

UL recognized file no. IZLT2.E35113

cUR file no. IZLT8.E35113

CE compliant

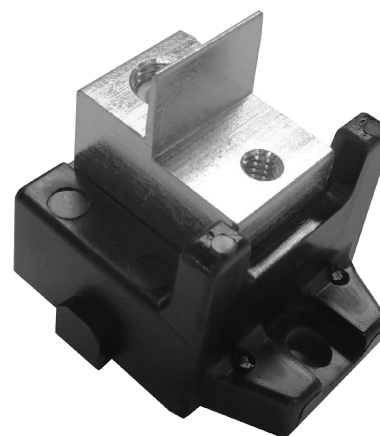
RoHS compliant

WEBSITE RESOURCES:

Dimensional drawings & 3D CAD files

Termination and mounting specifications

Detailed product data sheets



1MS101

VOLTS	MAX AMPS	CATALOG # ¹	WIRE RANGE	FASTENER SIZE	TESTED AT:	
					I ² t	I _p
600	100	1MS101	2/0 - #14	1/4 - 20	193kA	27.4kA
	400	1MS102	(2) 250 kcmil - #6	1/4 - 21	3480 kA	69.5 kA
	400	1MS103	(2) 250 kcmil - #6	3/8 - 16	3480 kA	69.5 kA
	600	1MS104	(2) 500 kcmil - #6	3/8 - 17	2840kA	50.8 kA

¹Each item provides one unit

CLASS H

ELECTRICAL:

See table

STANDARDS:

UL recognized file no. IZLT2.E35113

CSA certified file no. LR21455

CE compliant

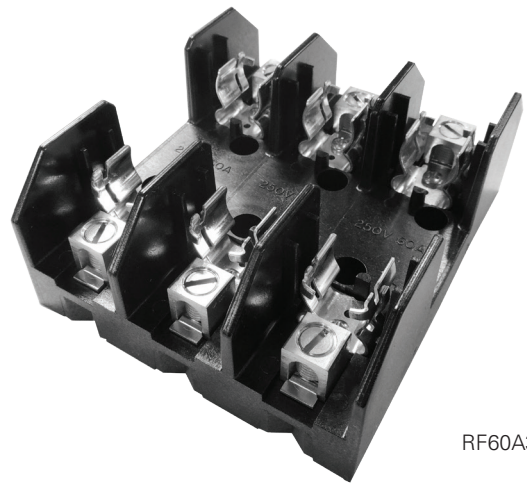
RoHS compliant

WEBSITE RESOURCES:

Dimensional drawings & 3D CAD files

Termination and mounting specifications

Detailed product data sheets



RF60A3B

VOLTS	AMPS	CATALOG # (REPLACE "X" WITH # OF POLES)	POLES (x)	BASE MATERIALS	WIRE RANGE
250	30	RF30AxS ¹	1/2/3	Thermoplastic	#10 - #22 AWG CU
	30	RF30AxSP ¹	1/2/3	Thermoplastic	#10 - #14 AWG CU
	30	RF30AxB ¹	1/2/3	Thermoplastic	#6 - #14 AWG CU
	60	RF60AxSQ ²	1/2/3	Thermoplastic	#10 - #22 AWG CU
	60	RF60AxB	1/2/3	Thermoplastic	#2 - #14 AWG CU #2 - #12 AWG AL
	100	RF100AxB	1/2/3	Phenolic	2/0 - #14 AWG CU 2/0 - #12 AWG AL
	200	F200AxBE	1/3	Polyester	250 kcmil #6 AWG CU AL
	400	RF400AxB	1/3	Phenolic	(2) 350 kcmil 1/0 AWG CU AL
	600	F600AxB	1/3	Phenolic	(2) 500 kcmil 1/0 AWG CU AL
600	30	R6F30AxS ¹	1/2/3	Phenolic	#10 - #22 AWG CU
	30	R6F30AxSP ¹	1/2/3	Phenolic	#10 - #14 AWG CU
	30	R6F30AxB ¹	1/2/3	Phenolic	#6 - #14 AWG CU
	60	R6F60AxB ¹	1/2/3	Phenolic	#2 - #14 AWG CU #2 - #12 AWG AL
	100	R6F100AxB	1/2/3	Phenolic	2/0 - #14 AWG CU 2/0 - #12 AWG AL
	200	6F200AxBE	1/3	Polyester	250 kcmil #6 AWG CU AL
	400	R6F400AxB	1/3	Phenolic	(2) 350 kcmil 1/0 AWG CU AL
	600	6F600AxB	1/3	Phenolic	(2) 500 kcmil 1/0 AWG CU AL

¹For non-reinforced version, remove "R" in catalog number

²UL recognized file no. IZLT2.E35113

See page 55 for available covers

See page 56 for DIN rail adapter

Contact Customer Service for stud options

CLASS J

ELECTRICAL:

30 to 600 amps, 600 volts
 200,000 amp withstand
 For use with UL Class J fuses only

STANDARDS:

UL recognized file no. IZLT.E35113
 cULus (for Canada) file no. IZLT7.E35113
 CE compliant
 Touchsafe design (IP20) per IEC60529
 RoHS compliant

WEBSITE RESOURCES:

Dimensional drawings & 3D CAD files
 Termination and mounting specifications
 Detailed product data sheets



6SJ60AIC

ENCLOSED

AMPS	CATALOG # (REPLACE "x" WITH # OF POLES)	POLES (x)	BASE MATERIALS	WIRE RANGE
30	6SJ30AxIC	1/2/3	Thermoplastic	#1 - #18 AWG (2) #10 - #12 AWG
60	6SJ60AxIC	1/2/3	Thermoplastic	#1 - #14 AWG (2) #6 - #14 AWG



6SJ60AIC (2 pole)

FUSE HOLDERS

CLASS J

ELECTRICAL:

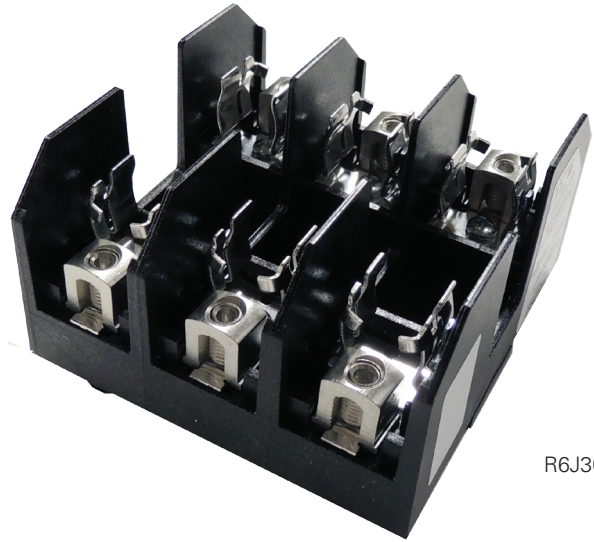
30 to 600 amps, 600 volts
 200,000 amp withstand
 For use with UL Class J fuses only

STANDARDS:

UL recognized file no. IZLT.E35113
 CSA certified file no. LR21455
 CE compliant
 Touchsafe design (IP20) per IEC60529
 RoHS compliant

WEBSITE RESOURCES:

Dimensional drawings & 3D CAD files
 Termination and mounting specifications
 Detailed product data sheets



R6J30A3B

BARRIER

AMPS	CATALOG # (REPLACE "x" WITH # OF POLES)	POLES (x) (E=EXPANDER)	BASE MATERIALS	WIRE RANGE
30	R6J30AxS ¹	1/2/3/E	Thermoplastic	#10 - #22 AWG CU
30	R6J30AxSP ¹	1/2/3/E	Thermoplastic	#10 - #14 AWG CU
30	R6J30AxB ¹	1/2/3/E	Thermoplastic	#6 - #14 AWG CU
60	R6J60AxB ¹	1/2/3	Thermoplastic	#2 - #14 AWG CU AL
100	R6J100AxB	1	Thermoplastic	2/0 - #14 AWG CU 2/0 - #12 AWG AL
100	R6J100AxB	3	Phenolic	2/0 - #14 AWG CU 2/0 - #12 AWG AL
200	6J200AxBFBD	1/3	Phenolic	250 kcmil #6 AWG CU AL
400	6J400AxBFBD	1/3	Phenolic	(1) 600 - #2 kcmil (1) 350 - #6 AWG CU AL
400	MFH6063DD	1	Thermoplastic	3/8" Tap & Fastener
600	MFH8065FF	1	Thermoplastic	1/2" Tap & Fastener

¹ For non-reinforced version, remove "R" in catalog number

See page 55 for available covers
 See page 56 for DIN rail adapter
 Contact Customer Service for stud options
 Fuse mounting hardware supplied with fuse holder



6J200A3BFBD

MIDGET

ELECTRICAL:

Amps & volts - see chart
 For use with midget 10 x 38 mm fuses
 Blown fuse indication available (6SM30AxI C only)

STANDARDS:

UL recognized file no. IZLT2.E35113
 CSA certified file no. LR21455
 CE compliant
 Touchsafe design (IP20) per IEC60529 (enclosed only)
 RoHS compliant

WEBSITE RESOURCES:

Dimensional drawings & 3D CAD files
 Termination and mounting specifications
 Detailed product data sheets



6SM30AI C

ENCLOSED

AMPS	VOLTAGE	AMP WITHSTAND	CATALOG # (REPLACE "x" WITH # OF POLES)	POLES (x)	BASE MATERIAL	WIRE RANGE
30	1000	200,000	6SM30AX C	1/2/3/4	Thermoplastic	(1) #6 - #18 CU Stranded
30	600	200,000	6SM30AXI C	1/2/3/4	Thermoplastic	(1) #10 - #18 Solid (2) #10 - #18 Stranded

EFK-MCKK - Pin kit (used for ganging multiple poles) - includes 10 handle pins and 20 body clips, use one handle pin and two body clips per pole.



6M30A3BCU



6M30A3SPQ

BARRIER

AMPS	VOLTAGE	AMP WITHSTAND	CATALOG # (REPLACE "x" WITH # OF POLES)	POLES (x)	BASE MATERIAL	WIRE RANGE
30	600	100,000	6M30AxSQ	1/2/3	Thermoplastic	#10 - #22 AWG CU
30	600	100,000	6M30AxSPQ	1/2/3	Thermoplastic	#10 - #14 AWG CU
30	600	100,000	6M30AxB	1/2/3	Thermoplastic	#6 - #14 AWG CU
30	600	100,000	6M30AxBCU	1/2/3	Thermoplastic	#6 - #14 AWG CU

See page 55 for available covers
 See page 56 for DIN Rail Adapter

CLASS R

ELECTRICAL:

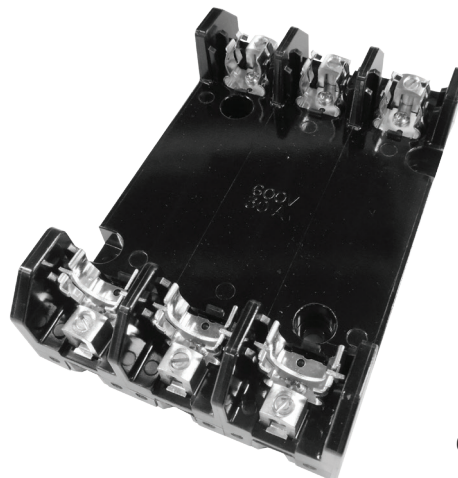
30 to 600 amps, 250 & 600 volts
 200,000 amp withstand
 For use with UL Class R fuses only

STANDARDS:

UL recognized file no. IZLT2.E35113
 CSA certified file no. LR21455
 CE compliant
 RoHS compliant

WEBSITE RESOURCES:

Dimensional drawings & 3D CAD files
 Termination and mounting specifications
 Detailed product data sheets



6R30A3B

VOLTAGE	AMPS	CATALOG # (REPLACE "x" WITH # OF POLES)	POLES (x)	BASE MATERIALS	WIRE RANGE
250	30	R30AxS	1/2/3	Thermoplastic	#10 - #22 AWG CU
	30	R30AxSP	1/2/3	Thermoplastic	#10 - #14 AWG CU
	30	R30AxB	1/2/3	Thermoplastic	#6 - #14 AWG CU
	60	R60AxB	1/2/3	Thermoplastic	#2 - #14 AWG CU #2 - #12 AWG AL
	100	R100AxB	1/2/3	Phenolic	2/0 - #14 AWG CU 2/0 - #12 AWG AL
	200	R200AxBE	1/3	Polyester	250 kcmil #6 AWG CU AL
	400	R400AxB	1/3	Phenolic	(2) 350 kcmil - 1/0 AWG CU AL
600	30	6R30AxS	1/2/3	Phenolic	#10 - #22 AWG CU
	30	6R30AxSP	1/2/3	Phenolic	#10 - #14 AWG CU
	30	6R30AxB	1/2/3	Phenolic	#6 - #14 AWG CU
	60	6R60AxB	1/2/3	Phenolic	#2 - #14 AWG CU #2 - #12 AWG AL
	100	6R100AxB	1/2/3	Phenolic	2/0 - #14 AWG CU 2/0 - #12 AWG AL
	200	6R200AxBE	1/3	Polyester	250 kcmil #6 AWG CU AL
	400	6R400AxB	1/3	Phenolic	(2) 350 kcmil 1/0 AWG CU AL

See page 55 for available covers
 See page 56 for DIN rail adapter
 Contact Customer Service for stud options
 Fuse mounting hardware supplied with fuse holder

CLASS T

ELECTRICAL:

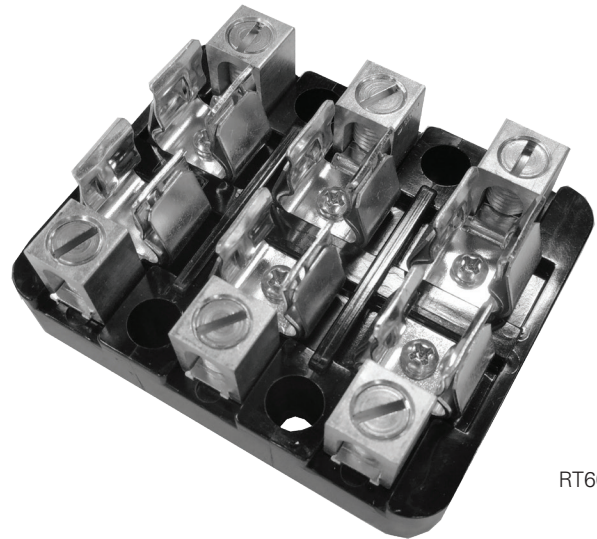
30 to 800 amps, 300 & 600 volts
 200,000 amp withstand
 For use with UL Class T fuses only

STANDARDS:

UL recognized file no. IZLT2.E35113
 CSA certified file no. LR21455
 CE compliant
 RoHS compliant

WEBSITE RESOURCES:

Dimensional drawings & 3D CAD files
 Termination and mounting specifications
 Detailed product data sheets
 Accessories available



RT60A3B

VOLTS	AMPS	CATALOG # (REPLACE "x" WITH # OF POLES)	POLES (x)	BASE MATERIALS	WIRE RANGE
300	30	RT30AxB	2/3	Phenolic	#2 - #14 AWG CU #2 - #12 AWG AL
	60	RT60AxB	2/3	Phenolic	#2 - #14 AWG CU #2 - #12 AWG AL
	100	T100AxB	1/3	Phenolic	2/0 - #14 AWG CU 2/0 - #12 AWG AL
	200	T200AxB	1/3	Phenolic	250 kcmil #6 AWG CU AL
	400	T400AxB	1/3	Phenolic	(2) 250 kcmil #6 AWG CU AL
	600	T600AxB	1	Phenolic	(2) 500 kcmil #6 AWG CU AL
600	30	R6T30AxS	2/3	Phenolic	#10 - #22 AWG CU
	30	R6T30AxSP	2/3	Phenolic	#10 - #14 AWG CU
	30	R6T30AxB	2/3	Phenolic	#2 - #14 AWG CU #2 - #12 AWG AL
	60	R6T60AxB	2/3	Phenolic	#2 - #14 AWG CU #2 - #12 AWG AL
	100	6T100AxB	1/3	Phenolic	2/0 - #14 AWG CU 2/0 - #12 AWG AL
	200	6T200AxB	1/3	Phenolic	250 kcmil #6 AWG CU AL
	400	6T400AxB	1	Phenolic	(2) 250 kcmil #6 AWG CU AL
	600	6T600AxB	1	Phenolic	(2) 500 kcmil #6 AWG CU AL
	800	MFH8065DD	1	Thermoplastic	1/2" Tap & Fastener

COVERS & PULLERS

COVERS:

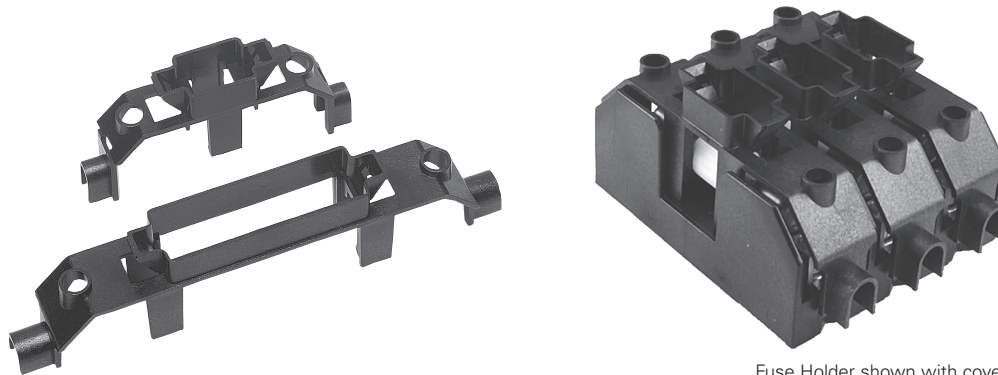
UL listed accessories under file no. JDVS2.E181825

Opening allows view of self-indicating fuses

Holes for test probes and re-tightening of wire terminations

Provides IP20 (touchsafe) protection per IEC 60529 (30A & 60A models)

RoHS compliant



Fuse Holder shown with covers attached

FUSE TYPE	AMPS	VOLTAGE	CATALOG #	FOR USE WITH FUSE HOLDER #	IP20 (FINGER SAFE)*
H/R	30	250	CHR230	F30A / R30A	Yes
H/R	60	250	CHR260	F60A / R60A	Yes
H/R	100	250	CHR2100	RF100A / R100A	Yes
H/R	30	600	CHR630	6F30A / 6R30A	Yes
H/R	60	600	CHR660	6F60A / 6R60A	Yes
H/R	100	600	CHR6100	R6F100A / 6R100A	Yes
J	30	600	CJ630	6J30A	Yes
J	60	600	CJ660	6J60A	Yes
J	100	600	CJ6100-1C	R6J100A	No
J	100	600	CJ6100-2C	R6J100A	No
J	100	600	CJ6100-3C	R6J100A	No
CC, G	30	600	CC630	6CC30A	Yes
CD	60	600	CC660	R6CC60A	Yes
MISC	30	600	CCM630**	6M30A / 6CCM30A	Yes

*Applications involving fuse holders other than Marathon may not provide IP20 finger protection

**Covers are recognized if used with recognized fuses

COVER-PULLER (CATALOG # CVR-MCC):

For use with

- Class CC (30 amp)
- Midget, 10 x 38 (30 amp)
- Class G (15 & 20 amp only)

Provides IP20 (touchsafe) protection per IEC 60529 (30A & 60A models)

RoHS compliant

