

REPORT

84 Series



finder®

SWITCH TO THE FUTURE

NEW



SMARTimer Type 84.02


**Digital Timer “Two in one”:
two totally independent
programmable channels,
in a single product**

A step forward for easier, quick and flexible programming right from your smartphone. With NFC technology and “Finder Toolbox” Android App.



Android, Google Play and the Google Play logo are trademarks of Google Inc



Approvals
(according to type)  UL US
UL File E81856

FEATURES

- Two programming modes: “Smart” mode via smartphone with NFC communication or “Classic” mode via the joystick
- Wide backlit display for easy reading of all information during the programming phase and during normal operation
- Flexibility: it’s possible to create new specific functions, mixing the 25 available functions on each channel
- High precision and possibility of choice in time set-up: - Time units; 0.1 seconds, seconds, minutes, hours
- Set-time to 4 digits, anywhere between 000.1 second and 9999 hours
- Large display allows easy viewing: set time, current time, timing in progress, input command state, output state
- 1 CO (16 A) + 1 CO (16 A) output contacts



Type 84.02.0.230.0000

- Nominal voltage: 110...240 V AC/DC (non-polarized)
- Operating range: 90...264 V AC/DC (47/63Hz)

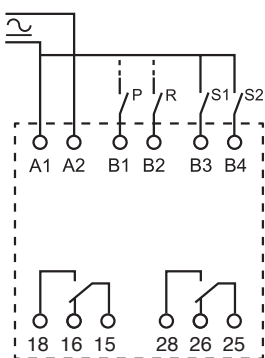


Type 84.02.0.024.0000

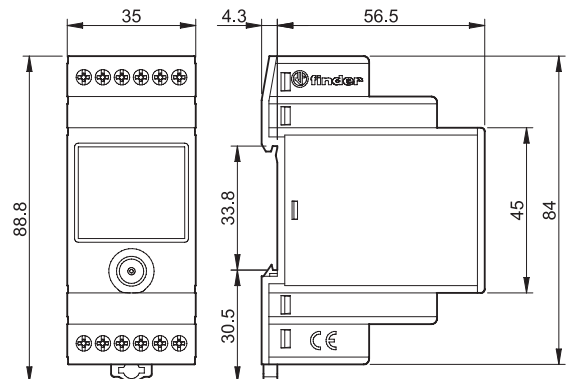
- Nominal voltage: 12...24 V AC/DC (non-polarized)
- Operating range: 10...30 V AC/DC (47/63Hz)
- It's possible to directly connect timer input to proximity sensors (both PNP and NPN)

FUNCTIONS

| | |
|------------|--|
| OFF | Relay OFF |
| ON | Relay ON |
| AI | On-delay |
| DI | Interval |
| GI | Pulse delayed |
| LI | Asymmetrical flasher (starting pulse ON) |
| PI | Asymmetrical flasher (starting pulse OFF) |
| SW | Asymmetrical flasher (starting pulse ON) |
| SP | Asymmetrical flasher (starting pulse OFF) |
| AE | On-delay with control signal |
| BE | Off-delay with control signal |
| CE | On- and off-delay with control signal |
| DE | Interval with control signal ON |
| EE | Interval with control signal OFF |
| FE | Interval with control signal ON and OFF |
| EEa | Interval with control signal OFF (retriggerable) |
| EEb | Interval with control signal OFF |
| WD | Watchdog (retriggerable interval with control signal ON) |
| GE | Pulse delayed with control signal ON |
| LE | Asymmetrical flasher (starting pulse ON) with control signal |
| PE | Asymmetrical flasher (starting pulse OFF) with control signal |
| IT | Timing step |
| SS | Monostable controlled by Signal switch |
| PS | Monostable controlled by Pause switch |
| SHp | Shower function (off-delay with control signal and pause signal) |



- Two independent Start input - one per channel
- One common Reset input (select to apply to either, or both, channels)
- One common Pause input (select to apply to either, or both, channels)
- PIN to protect access to programming session
- Up or Down timing modes
- Setting accuracy-full range: $\pm 0,05\%$
- Ambient temperature range: $-20^{\circ} + 50^{\circ}$
- 35 mm rail (EN 60715) mount



ZDPENUSRE84 - V1/16

FINDER reserves the right to alter characteristics at any time without notice. FINDER assumes no liability for damage to persons or property, caused as a result of the incorrect use or application of its products.