

**Want to combine markings with progress**  
**Our PrintJet ADVANCED delivers systemised marking**  
Let's connect.

Industrial marking systems



**Weidmüller** 

# Systemised marking for optimised processes

## Our coordinated complete system



Professional, industrial marking in line with the IEC 60204-1:2005 standard is essential for faultless operation and reliable maintenance of industrial facilities. Weidmüller calls this "systemised marking" and offers more than the norm: a perfectly coordinated product range for optimised processes.



### Your marking needs

One of the main requirements of a marking system is that it clearly shows how your components are configured. This includes a precise print image, convenient handling and the guarantee of usability in an industrial environment. The software should provide optimum support during data entry and management. During marker output, the speed should be adapted to your needs.



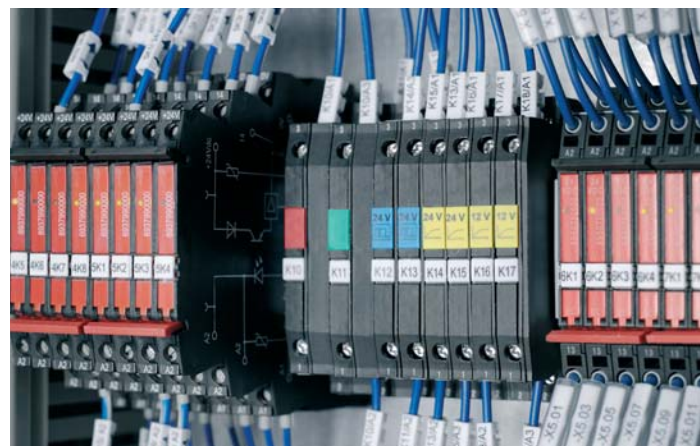
**Software:** intuitive to use and tailored to your requirements. Import, edit and manage data with ease with the M-Print®-PRO-software.



**Markers:** constructive solutions for all cabinet-related applications. From the shrink sleeve to the metal marker.



**Printers:** laser, ink or thermal transfer. Industrial printing systems for every requirement. Designed with one eye on the future to suit your requirement profile.



Do you need marking systems for a whole range of different applications? Our all-in-one solutions are intelligent and display real future viability: convenient data organisation, intelligent functions and marking conforming to standards make our systems unique.



### The marking result

You will be won over by marking systems from Weidmüller. We don't just offer you a complete, convenient process chain from data entry to ready-for-use markers for your individual cabinet configuration. We offer you marking solutions that are already geared towards the future requirements of progressive automation. This means you are one step ahead of state-of-the-art!



## Intelligent marking systems for the industries of today and tomorrow

### Organising connections fit for the future with marking systems from Weidmüller

Decentralised self-organisation, intelligent networking and universal functionality are keywords for the future viability of your industrial facility. To optimally organise intelligent control with ever more powerful components with as few resources as possible, you need a marking solution that clears up complexity – designed for practical use and planned for the long term. Marking systems from Weidmüller will help you do just that.

As your partner, we adapt to your needs with applications for all industries, the breadth of which has never been seen before. Software, markers and printers from Weidmüller impress because they are produced in dialogue with you, our customers. As precisely coordinated systems, they integrate perfectly into your industry's surroundings and processes. Our products always display impressive usage and handling, print image, speed and longevity. And this is especially the case with the new PrintJet ADVANCED which can be used as a flexible stand-alone solution with standard printing of metal markers and an extremely high rate of throughput.

### Robust material

Plastic that doesn't come in small sizes. Our markers counter vibration and other long-term effects with unique strength and robustness.

### Fit for use outdoors

You can rely on our marking systems to withstand extreme climatic conditions.

### Heat-tested

Markers which love the extreme. High temperatures, as experienced in many industrial environments, are easily withstood by our markers.

### Resistant to chemicals

Long-term legibility. Our markers are resistant to all common industrial cleaning agents.



Support as new industrial standards are developed: the PrintJet ADVANCED provides all the functions you need for future-viable marking





**Think ADVANCED**

The PrintJet with built-in progress



The PrintJet ADVANCED is designed to the most exacting requirements of progressive automation. Whether marking for IP 20, IP 67 or outdoors, it's easy to get started: with convenient plug&play, value for money and impressive performance.

6000 markers in 45 minutes – the sensational result of a further development of our successful PrintJet series, with countless benefits for your marking process. Regardless of the industrial surroundings, the PrintJet ADVANCED can be used as a stand-alone solution anywhere, at any time and without delay. That's what makes it so convenient. If necessary, 24-hour operation is possible without any monitoring of the print process. That saves time. Metal marker printing is available as standard and opens up additional possibilities.

Thanks to the integrated industrial PC, spontaneous orders can also be implemented at speed: The software components needed and all common standard layouts are pre-installed. All this with maximum system transparency and intuitive operation via the pivoting touch panel. That simplifies working. If you consider consumption, emissions and efficiency, the PrintJet ADVANCED is the most cost-effective marking solution available. Think progress:  
**Think ADVANCED.**



## Properties that generate benefits Functions that set standards

Want to organise your time efficiently and complete marking work without any stress? Then your marking system needs to provide maximum flexibility and be available at any location. Want to print a large number of markers during peak hours without drops in quality and without monitoring if at all possible? The PrintJet ADVANCED reliably meets all these needs and more. See for yourself its unique functions which will make light work of your marking tasks. You can't fail to be impressed with how the PrintJet ADVANCED optimises your work processes.



### 1. Optimised operation

The 4.7" true colour TFT touch panel can be swivelled and tilted to greatly simplify the work process. Use of an easy-to-understand operator front-end reduces complexity to an absolute minimum and makes your work stress-free and very simple. 28 integrated languages make the printer a global player.



### 2. Metal marking as standard

You can use the PrintJet ADVANCED to print both MultiCard and MetalliCard formats. This offers you maximum scope of use, flexibility and independence from external providers.



### 3. Cost savings guaranteed

The self-regulating thermal fixing for surface sealing of a consistent quality makes the marker incredibly resistant and extremely durable in an industrial environment. This saves money because the marker doesn't have to be replaced on a regular basis.

### 1. Intuitive touch display



### 2. Printing of plastic and metal markers as standard



### 3. Highly resistant labelling



### 6. Brilliant colour printing



### 4. High magazine capacity



### 5. Stand-alone function



### Unbeatable overall package

Brilliant print result, absolute process stability and a high level of automation: challenging marking requirements are met by the PrintJet ADVANCED. Its low operating costs speak for themselves – it doesn't get any more efficient than this!



### 4. Increased processing volumes

With a holding capacity of up to 30 MultiCards, the PrintJet ADVANCED is able to process 6000 markers with just one click - no need for operator intervention and ready for immediate use. A high level of automation which improves efficiency and optimises processes at the same time.



### 5. Extended flexibility

Thanks to its stand-alone function, the PrintJet ADVANCED can also be used peripherally without a direct software connection. An integrated industrial PC can process your preconfigured print orders directly via the USB port.



### 6. Improves safety

It's easier to maintain and identify equipment with colour identification. Warning and safety information have a clear impact due to signal colours. Some standards even recommend colour identification.



# The advanced ink-jet printer

## Our PrintJet ADVANCED for exacting standards

### Flexible printing of plastic and metal markers

The PrintJet ADVANCED is an inkjet printer which prints plastic markers in MultiCard format and metal markers from the MetalliCard family. Thanks to its high magazine capacity, it is ideal for printing large volumes in continuous operation. The precise colour printing and thermal fixing guarantee optimum print results for durable equipment identification. With these properties, the PrintJet ADVANCED brings efficiency to the operating process – whether operated with the M-Print®-PRO-software or as a stand-alone solution with pre-installed print templates.

### The advantages for you at a glance:

- Precise colour printing
- Printing of metal markers as standard
- High level of automation thanks to magazine capacity of 30 MultiCards
- Durable and robust markers thanks to thermal fixing
- User-friendly thanks to intuitive touch display
- Can be used as stand-alone solution



### Technical data

	Description
Intended use	Printing Weidmüller MultiCards and MetalliCards
Technology	Inkjet procedure with integrated thermal fixing unit
Print quality	600 dpi; 1,200 dpi
Labelling software	M-Print® PRO
System requirements	Microsoft Windows® 7, VISTA or XP
Feed	Automatic magazine for max. 30 MultiCards Individual feed for MetalliCards and MultiCards
Interfaces	USB 1.1/2.0 and network 10 Base-T/100 Base-TX
Voltage supply	AC 220–240 V/4 A, 50/60 Hz or AC 100–120 V/8 A, 50/60 Hz
Fuses	Right fuse: 10 ATH 240/120 V Left fuse: 2,5 ATH 240/120 V
Application site	Office conditions
Ambient temperature	10 °C – 35 °C 50 °F – 95 °F
Dimensions	Length including output rail: approx. 1,138 mm (44.80") Length not including output rail: approx. 945 mm (37.20") Width: 554 mm (21.81") Height with touch panel folded down: 328 mm (12.91") Height with touch panel folded up: 422 mm (16.61")
Weight	57.8 kg (127.43 lb) with packaging 37.2 kg (82.01 lb) without packaging
Ink system	Colour system – black, cyan, magenta, yellow
Included in delivery	<ul style="list-style-type: none"> <li>• PrintJet ADVANCED</li> <li>• Mains cable</li> <li>• USB cable</li> <li>• One MultiCard DEK 5/5</li> <li>• Ten MetalliCards CC-M 85/54 AL</li> <li>• Ten primer cloths</li> <li>• One inlay</li> <li>• One output rail</li> <li>• DVD with M-Print® PRO software</li> <li>• Quick start guide</li> <li>• Operating manual</li> </ul>

The ink cartridges and ink collector tray are installed in the printer.

### Ordering data

Type	Mat. no	QTY
PrintJet ADVANCED 230 V	1324380000	1
PrintJet ADVANCED 115 V	1338700000	1
PJ ADV TNTK INK K ink cartridge, black	1338690000	1 ■
PJ ADV TNTK INK C ink cartridge, cyan	1338680000	1 ■
PJ ADV TNTK INK M ink cartridge, magenta	1338670000	1 ■
PJ ADV TNTK INK Y ink cartridge, yellow	1338650000	1 ■
PJ ADV TNTK INK SET ink set	1338720000	1 ■■■■
TNAW PJ ADV ink collector tray	1338710000	1



**Progress that puts others in the shade:  
experience exceptional industrial  
printing firsthand.**

The PrintJet ADVANCED performs well in comparison with any competitor. See for yourself. With printed samples or a live demonstration – Our sales team is there for you whenever you need them! If you are impressed by the intelligence of the PrintJet ADVANCED and want to order one right away, then get in touch for a quotation!

**Weidmüller** 



**Let's connect.**

Visit our online microsite:  
with 3D views, video clips and all  
facts and framework data available  
to download. Use your smartphone to  
scan the QR code or go to  
[www.printjet-advanced.com](http://www.printjet-advanced.com)

**Scan progress  
and check the facts.  
Let's connect.**



## Weidmüller – Partner in Industrial Connectivity.

As experienced experts we support our customers and partners around the world with products, solutions and services in the industrial environment of power, signal and data. We are at home in their industries and markets and know the technological challenges of tomorrow. We are therefore continuously developing innovative, sustainable and useful solutions for their individual needs. Together we set standards in Industrial Connectivity.

Weidmüller Interface GmbH & Co. KG  
Klingenbergstraße 16  
32758 Detmold, Germany  
Phone +49 5231 14-0  
Fax +49 5231 14-2083  
info@weidmueller.com  
www.weidmueller.com



**Let's connect.**

Further information  
are available at:  
[www.systemised-marking.com](http://www.systemised-marking.com)



Order number: 1440100000/03/2013/SMKW